

ONI



TEEN
T
CONTENT RATED BY
ESRB

R
★



NO ONE LEFT TO TRUST

WARNING: READ BEFORE USING YOUR PLAYSTATION®2 COMPUTER ENTERTAINMENT SYSTEM.

A very small percentage of individuals may experience epileptic seizures when exposed to certain light patterns or flashing lights. Exposure to certain patterns or backgrounds on a television screen or while playing video games, including games played on the PlayStation 2 console may induce an epileptic seizure in these individuals. Certain conditions may induce previously undetected epileptic symptoms even in persons who have no history of prior seizures or epilepsy. If you, or anyone in your family, has an epileptic condition, consult your physician prior to playing. If you experience any of the following symptoms while playing a video game – dizziness, altered vision, eye or muscle twitches, loss of awareness, disorientation, any involuntary movement, or convulsions – IMMEDIATELY discontinue use and consult your physician before resuming play.

WARNING TO OWNERS OF PROJECTION TELEVISIONS:

Do not connect your PlayStation 2 console to a projection TV without first consulting the user manual for your projection TV, unless it is of the LCD type. Otherwise, it may permanently damage your TV screen.

USE OF UNAUTHORIZED PRODUCT:

The use of software or peripherals not authorized by Sony Computer Entertainment America may damage your console and/or invalidate your warranty. Only official or licensed peripherals should be used in the controller ports or memory card slots.

HANDLING YOUR PLAYSTATION 2 FORMAT DISC:

- This disc is intended for use only with PlayStation 2 consoles with the NTSC U/C designation.
- Do not bend it, crush it or submerge it in liquids.
- Do not leave it in direct sunlight or near a radiator or other source of heat.
- Be sure to take an occasional rest break during extended play.
- Keep this compact disc clean. Always hold the disc by the edges and keep it in its protective case when not in use. Clean the disc with a lint-free, soft, dry cloth, wiping in straight lines from center to outer edge. Never use solvents or abrasive cleaners.



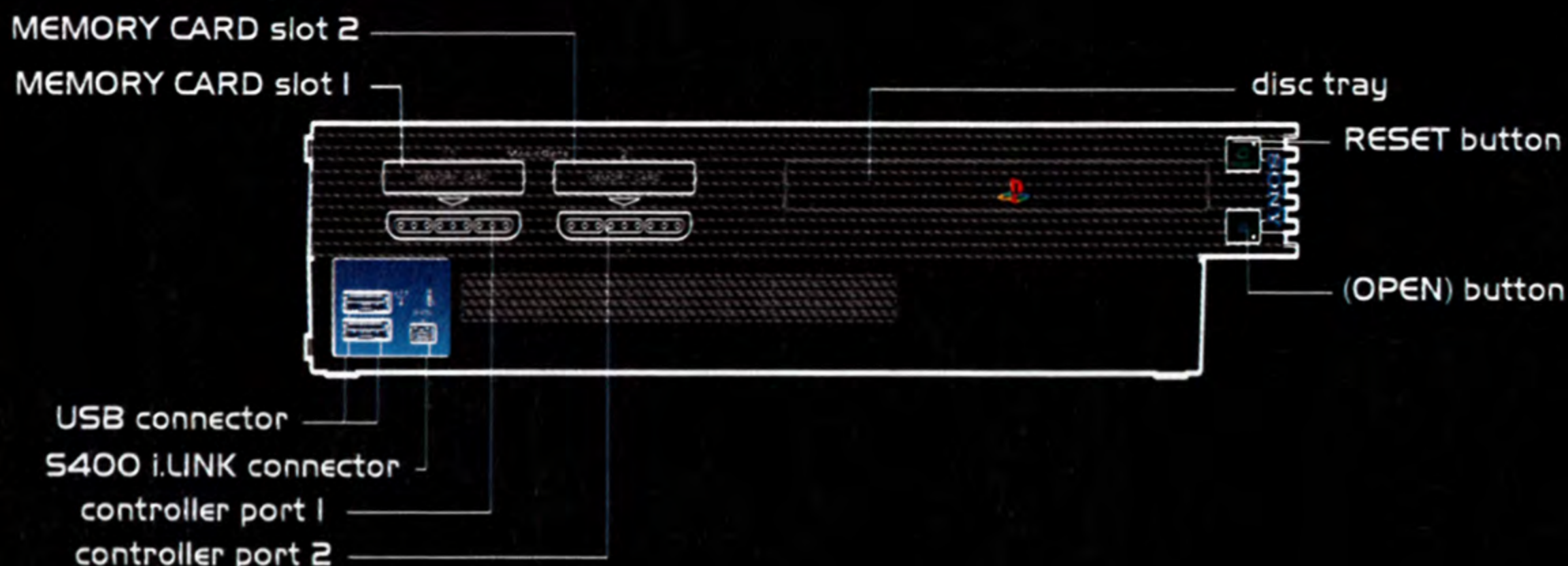
Getting Started	2
Pre-Mission Briefing	4
Menu Navigation	7
Options	7
How to Play Oni	8
Game Modes	9
Saving, Loading and Overwriting	9
Moves	11
Weapons	13
Character Bios – Friends and Foes	17
Tactical Display	27
Useful Items	28
Important Information	30
Credits	31







no one left to trust

GETTING STARTED



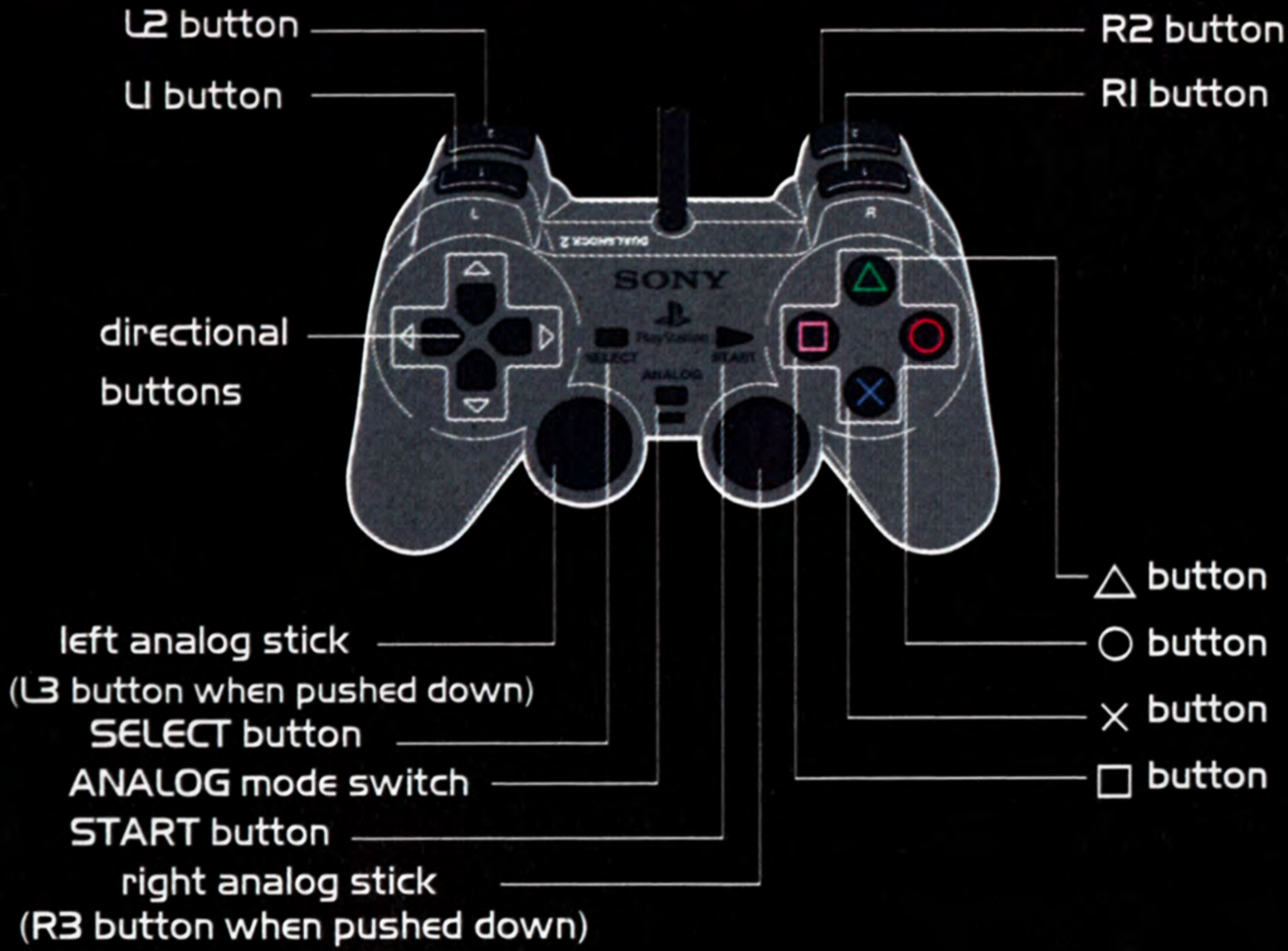
Set up your PlayStation®2 computer entertainment system according to the instructions in its Instruction Manual. Make sure the MAIN POWER switch (located on the back of the console) is turned on. Press the RESET button. When the power indicator lights up, press the open button and the disc tray will open. Place the ONI disc on the disc tray with the label side facing up. Press the open button again and the disc tray will close. Attach game controllers and other peripherals, as appropriate. Follow on-screen instructions and refer to this manual for information on using the software.

Reset Method

To exit to the Main Menu during gameplay, press the START button. On the pause screen choose the QUIT GAME option. When asked if you are sure you want to quit, press the  button if yes, and the  button if no.



DUALSHOCK™2 ANALOG CONTROLLER CONFIGURATIONS





NO ONE LEFT TO TRUST

PRE-MISSION BRIEFING

It's 2032 and the world ain't what it used to be.

We have one government where there used to be hundreds.
Big brother is alive and well.

In the cities most people have enough money to live quite well by the standards of the old world - if you don't mind the fact that the World Coalition Government tracks your every move.

THE WORLD COALITION GOVERNMENT

On January 12th, 2032 the newborn World Coalition Government annexed 80% of the countries of the world. The leaders of the new regime gave us all kinds of rationalizations for their actions, ranging from endless border skirmishes between impoverished nations to environmental problems that they claimed could only be solved if all of the "citizens of earth" worked together.

If the truth were told, it was all about the money.

Years of boom markets and reckless spending finally took their toll, leaving small countries bankrupt and superpowers teetering on the brink of collapse. By uniting the economies of the world all of the old debt was erased and everyone got a clean slate. At the time it seemed like the only way out. In a matter of years all traces of the old governments faded away. It was an economic coup on an unprecedented scale.

The WCG created a golden age for the privileged. Their ivory towers look like a modern utopia - but the poor are getting poorer and more restless every day.

THE TECHNOLOGY CRIMES TASK FORCE (TCTF)

The puppet masters behind the World Coalition Government preached



techno-phobia to keep the public in fear. They told the public that abuse of technology was the enemy, and that the Technology Crimes Task Force was our guardian. In the name of the common good they granted the TCTF blanket authority to investigate wherever and however they saw fit.

Sure, the TCTF does everything it is supposed to. They keep most of the "cyber drugs" and illegal weapons off the streets, but law enforcement is a smokescreen to excuse their actual purpose - they want to suppress anything that could be used to undermine their authority. The real abuse of technology begins and ends with the government and its TCTF enforcers.

THE SYNDICATE

In the shadows of the cities the Syndicate thrives by providing the desperate and the downtrodden with the opiates they need to distract themselves and the weapons they need to kill each other. One man is credited with the growing power of the Syndicate: Boss Muro. Muro came out of nowhere less than ten years ago and seized power by taking out all of the old Bosses. Since his rise things have gone from bad to worse. The TCTF has been at war with him for years but so far he has stayed one step ahead of the game.

YOU AND YOUR JOB

You are Konoko, a specially trained agent of the Technology Crimes Task Force, charged with your first mission. Your instincts tell you that something insidious is afoot as you infiltrate the cold underworld of the Syndicate. Commander Griffin, Regional Commander of the TCTF, is your mentor, boss, and even father figure. Shinatama is your SLD (Simulated Life Doll - a child-like android whose systems and structures imitate human biology) assistant, confidante, companion, and friend, and the two of you share a special bond, one that is both neural and emotional.



no one left to trust

TECH NOTE 1

The World Coalition Government realizes the extent of the ecological damage and has the ability to reverse a lot of it but has decided not to. It is in their best interest to maintain the centralization of wealth so the large population centers are preserved while "third world" regions are not. As a bonus the mounting death toll solves some of their over-population problems.

TECH NOTE 2

Shinitama is an SLD, or Simulated Life Doll. The SLDs were the first attempt to create an android - a manufactured organism whose systems and structures imitate human biology. An SLD breathes, eats, sweats, and can feel pain. They aren't actually human so are more durable than their flesh and blood counterparts. The brain of an SLD is created from the patterns and engrams of a human brain, often forming a close bond or link between the SLD and its human "pattern."

SLDs are cutting edge technology and as such are closely monitored by the TCTF. There are very few of them and most are modeled after children because the smaller bodies are easier to create (and easier to control if they run amok). The TCTF is experimenting with using "adult" SLDs as field agents because of their exceptional strength and intelligence.

The Syndicate have also been experimenting with SLD technology, but their efforts have been progressing much more quickly without all the rigorous safeguards used by more respectable scientists. The Tankers are the result of this experimentation: super tough, and super strong SLD warriors with a seriously bad attitude.



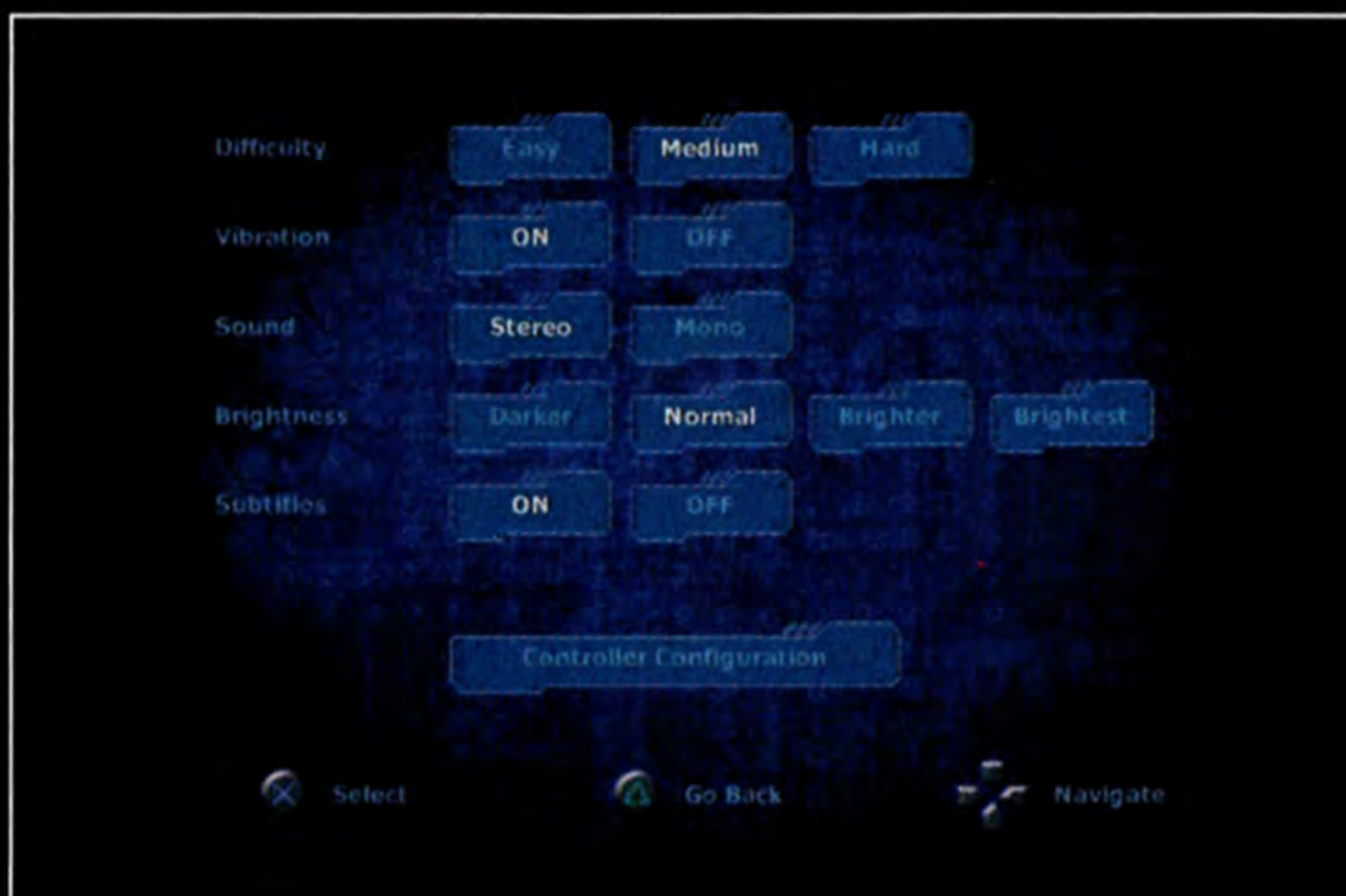
MENU NAVIGATION

On-screen button prompts will be provided on all menu screens, but the general rule is that the **X** button is used to select highlighted options/advance to the next screen, the **△** button is used to cancel operations/return to the previous screen, and the directional buttons are used to navigate through the menus.

OPTIONS

In the Options Menu you will be able to change a multitude of gameplay variables: Difficulty, Sound, Screen Brightness, Vibration, Subtitles, and Controller Configuration can be tailored to suit your preferences.

Note on Inverted Aiming: On the Controller Configuration Screen you will be able to toggle Inverted Aiming On and Off. Inverted Aiming simply switches Up and Down on the right analog stick. Experiment to see which arrangement you prefer.

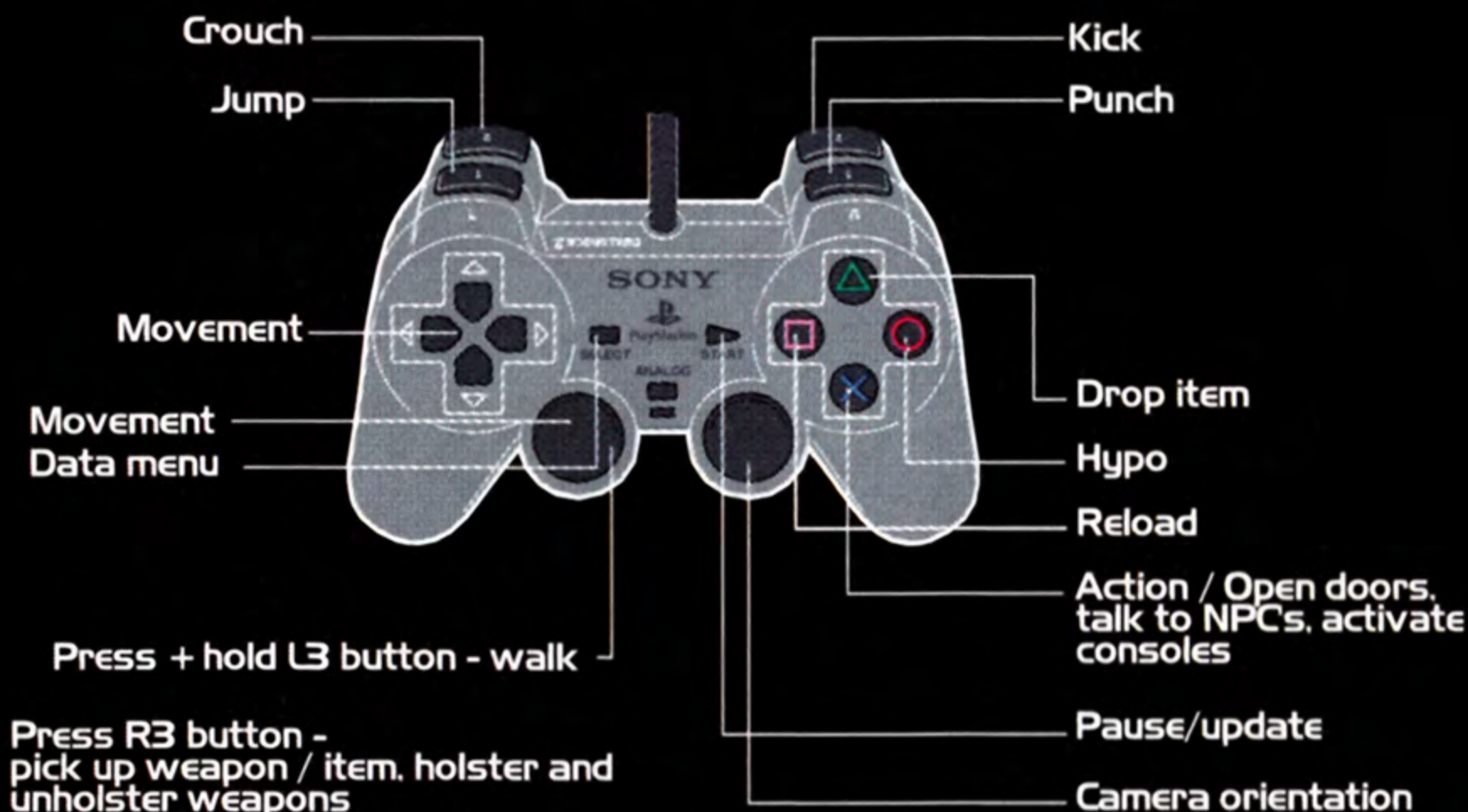


HOW TO PLAY ONI

Default Controls

- X button – Action (Open doors, talk to Non-player characters, activate consoles)
- △ button – Drop Item
- button – Reload Item
- button – Use Hypo
- L1 button – Jump
- L2 button – Crouch
- R1 button – Punch
- R2 button – Kick
- left analog stick – Movement
- right analog stick – Camera Control
- Press R3 button – Pick up weapon/item, Holster and Unholster weapons

DUALSHOCK™2 analog controller





GAME MODES

Oni is a one-player game. It's just you, on your own, matching wits and blows with the Syndicate. If you like, you can recruit a friend to be your own real-life Shinatama -- hang out, watch you play, offer advice, maybe even bring you cookies, and other foodstuffs of dubious nutritional value.

TCTF Training – This is where your game begins. Utilize this training facility as if your life depends on it -- because it does. Take the time and put in the effort to master all of your moves, because Boss Muro and his Syndicate are not fooling around. Remember the time-honored axiom: "Practice – you don't win just by doing it, but you can't win without it."

Note: TCTF Training is optional. To bypass TCTF Training, select Load Game instead of New Game on the Main Menu, and select Syndicate Warehouse.

SAVING, LOADING AND OVERWRITING

Saving A Game

Insert a memory card (8MB) (for PlayStation®2) with 128kb of free space into MEMORY CARD slot I. If you do not have enough free space, and your memory card (8MB) (for PlayStation®2) is inserted prior to the booting procedure, a message will appear informing you of how much free space there is on your memory card (8MB) (for PlayStation®2), and how much space you need in order to save your Oni game. If you do not have enough free space, and your memory card (8MB) (for PlayStation®2) is inserted after the booting procedure, a message will appear informing you that there is insufficient space to save when you begin a new game. You will be given the option to continue without saving; if you choose this option and begin



no one left to trust

a new game, your progress will only be saved until you turn the game off. To free up space on your memory card (8MB) (for PlayStation®2) refer to your PlayStation®2 Instruction Manual. Oni is an auto-save game; this means that your progress will be automatically saved every time you reach a save point (by completing certain missions and/or objectives). You will only be able to have one saved game going at a time, and only one Oni game can exist on your memory card (8MB) (for PlayStation®2). Because there will only be one saved game per memory card (8MB) (for PlayStation®2), you will not be able to enter your name or customize the saved game name. If an unformatted memory card (8MB) (for PlayStation®2) is inserted, the game will prompt you to format the memory card (8MB) (for PlayStation®2) when you begin a new game. If you wish to save your Oni game on that memory card (8MB) (for PlayStation®2), select YES – FORMAT and press the **X** button to confirm the prompt to format.

Loading / overwriting a saved game

Insert a memory card (8MB) (for PlayStation®2) with a previously saved Oni game on it into MEMORY CARD slot I. On the Main Menu you will be able to choose to load your previously existing game, or to start a new game. **WARNING:** If you choose to start a new game, you will overwrite the previous game according to the number of Save Points or Chapter you complete in the new game.

If you choose to load, you will be presented with a list of all the save points you have reached in your saved game. You may enter gameplay at any of these points. Even if you enter gameplay at a save point that is earlier in the game than the last save point you reached, your later game saves will still be available to you. Once you begin to advance through the game from that earlier save point, however, your new progress will overwrite your old progress, one save point at a time. For example, let's say you have a saved Oni game and you've reached 6 save points. You're not satisfied with your progress, however, so you load from save point 2. Your prior game progress at



save points 3 through 6 will remain intact until you reach each of those individual save points. Once you re-access save point 3 (and 4, and 5 and 6, one by one), your new progress will automatically overwrite your old progress. If you insert a memory card (8MB) (for PlayStation®2) that is unformatted or has no saved Oni game on it, and select load on the Main Menu, you will simply receive a message informing you of the condition of the memory card (8MB) (for PlayStation®2).

MOVES

Run, Konoko, Run! - Lord knows that's what you'll be doing a lot of in this game, but you are by no means a one-dimensional coward! Here are just some of the slick and/or gravity-defying moves you'll be able to perform, and how to pull them off:



Escape Moves - Press **CROUCH** + any **DIRECTION**. These are useful for avoiding hand-to-hand attacks -- and picking up objects!



Jump Flip - **JUMP**, then press **CROUCH** while in mid-air. Perform higher and longer jumps with flip. Also a great attack move!



Slide - While running press **CROUCH** to avoid traps, knock enemies off their feet, or pick up objects!



Throw - While standing next to an enemy press **FORWARD** (into the body of your enemy) + **PUNCH** or **KICK**. Try throwing from various angles to get different results.



Running Throw – While running towards an enemy press **KICK**. Great move if you don't have time to slow down!



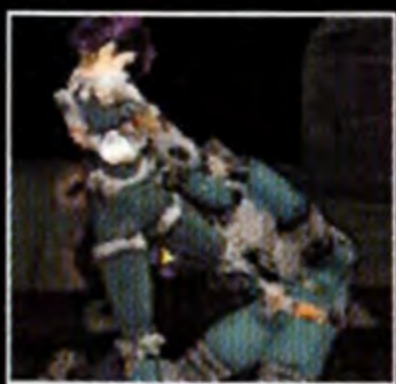
Sledgehammer Heel – Press **PUNCH, PUNCH, then KICK**. Slow move to get off but very, very powerful! Use with caution.



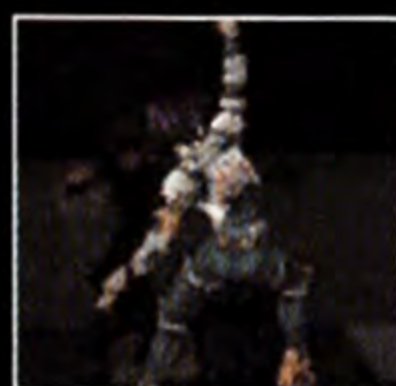
Block – Face your enemy and don't press any buttons to block normal attacks. Crouch to block low attacks.



Disarm – While standing next to an armed enemy press **FORWARD** (into the body of your enemy) + **PUNCH**. Try from different locations for different results.



Backbreaker – When standing behind an enemy hit **FORWARD** (into the body of your enemy) + **KICK**. Few enemies can survive such a brutal assault!



Triple-Hit Haymaker – Hit **PUNCH** three times in a row to perform this combo!

As Konoko progresses deeper into the Syndicate netherworld, she will become stronger and develop the capacity for special moves. You will be notified.

WEAPONS

Dose of Reality – Unlike many other games of the genre, in Oni you can carry only one weapon at a time; this will force you to strategize. The Syndicate will have to be brought down with Konoko's brains as well as her brawn.



Name Campbell Equalizer Mk4
Ammunition Type Ballistic Ammo
Magazine Capacity 10 rounds
Fire Rate 5 rounds per second

The Equalizer is the standard issue TCTF sidearm. It has undergone a number of refinements since the original model appeared during the World Coalition Government's rise to power.

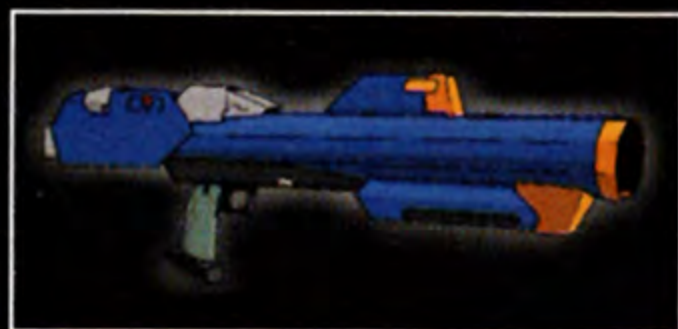
Hint: This weapon has high recoil. Compensate when firing on full auto.



Name Hughes Black Adder SMG
Ammunition Type Ballistic Ammo
Magazine Capacity 30 rounds
Fire Rate 12 rounds per second

Manufactured around the world in dozens of illegal factories, the Black Adder SMG is the weapon of choice for violent criminals, terrorists, and Syndicate assault troops.

Hint: Deadly at close range, but only useful for suppression fire beyond 6 meters.



Name SML3 Plasma Rifle
 Ammunition Type Energy Cells
 Magazine Capacity 10 rounds
 Fire Rate 1.1 rounds per second

The SML3 Plasma Rifle fires bursts of superheated plasma, encased in a 1.2 kT magnetic field, which explode upon impact.

Hint: Bursts accelerate rapidly during flight. Lead moving targets appropriately.



Name Phase Stream Projector
 Ammunition Type Energy Cells
 Magazine Capacity 300 Units
 Fire Rate Continuous

This device is a miniaturized version of the vehicle-mounted phase projectors deployed during the Freedom Riots of 2012. It emits a continuous beam of energy that can stagger or topple enemies.

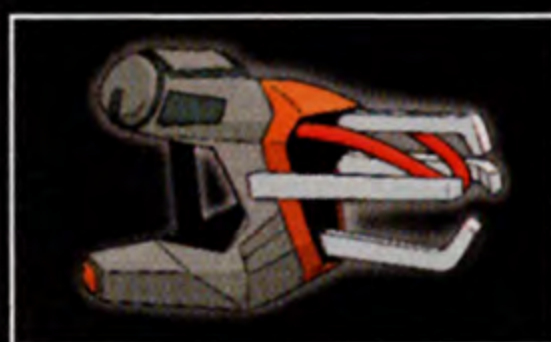
Hint: To aim, direct the weapon's energy beam.



Name SBG Man-Portable Mortar
 Ammunition Type Ballistic Ammo
 Magazine Capacity 4 rounds
 Fire Rate 1 round per 2 seconds

Scatter-pack Ballistic Grenade Man-Portable Mortar is too much of a mouthful, so troops all over the world simply refer to this weapon as the Superball Gun!

Hint: Fire normally for a default scatter pattern. To surprise your enemies with a carom, hold the trigger when firing to bounce shots, and then release to detonate.



Name Van de Graaff (VDG) Pistol
 Ammunition Type Energy Cells
 Magazine Capacity 5 rounds
 Fire Rate 1 round per 3.1 seconds

An extrapolation of fundamental electrical principles, the VDG Pistol is the ultimate "stun gun." Each shot is high voltage/low amperage, so it causes minimal physical harm.

Hint: Shots disable one or more enemies at close range. Attack or escape while victims are disoriented.



Name Scram Cannon
 Ammunition Type Ballistic Ammo
 Magazine Capacity 5 rounds
 Fire Rate 1 swarm per 2.5 seconds

The Scram Cannon is the most indiscriminate weapon of terror in the Syndicate's arsenal! Its homing missile swarms "scramble" toward targets moments after launch.

Hint: Missile warheads are inactive at close range. For best results, give swarms space to home in on their targets.



Name Mercury Bow
 Ammunition Type Ballistic Ammo
 Magazine Capacity 2 rounds
 Fire Rate 1 round per 5 seconds

Unlike its low-tech namesakes, this "bow" fires a compressed sliver of frozen mercury at ultra-high velocity. Damage comes both from the initial trauma of impact, and subsequent mercury poisoning.

Hint: Kills all but the strongest enemies with one shot. The bow must re-freeze after firing, and thus has a slow cycle-rate.



Name Screaming Cannon
Ammunition Type Energy Cells
Magazine Capacity 6 rounds
Fire Rate 1 round per 10 seconds

This weapon fires capsules that release a mysterious entity known as a Screaming Cell. These creatures seem to exist out of Earth phase, but feed on life force and are drawn to it when freed.

Hint: The cannon masks its wielder's life force from the entity, but any life that ventures too near it will be drained.



Name Wave Motion Cannon
Ammunition Type Unknown
Magazine Capacity Unknown
Fire Rate Unknown

This massive weapons array has been under development by Syndicate scientists for some time. Normally vehicle-mounted, it would require superhuman strength to lift or fire!

Hint: Try pressing other attack buttons for alternate fire modes.



CHARACTER BIOS - FRIENDS AND FOES

Name: Konoko

Bio Data: Orphaned at the age of 3, the woman now code-named Konoko has been raised as a ward of the World Coalition Government ever since. Her upbringing has been overseen by a legion of scientists and TCTF personnel, and she has been trained in the most advanced combat and counter-terrorism techniques.

Strengths: Master of hand-to-hand combat, expert marksman.

Special Moves: Rising Fury Punch

Devil Spin Kick

Twister Kick

Weaknesses: Emotional attachment to the Shinatama SLD.

Description: Konoko has been raised by the TCTF for as long as she can remember. She knows that she is somehow "different" from other people, but she is anxious to prove her self to Commander Griffin and the rest of the TCTF.

Name: Shinatama

Bio Data: Shinatama is an SLD (simulated life doll) android, responsible for coordinating the entire regional communications spine at TCTF regional headquarters.

Strengths: Extensive knowledge of TCTF operational data and security protocols.

Special Moves: None

Weaknesses: Non-combatant.

Description: Shinatama is neurally linked to Konoko and can communicate with her at all times. The neural link gives Konoko full access to Shinatama's scanning technology and knowledge database.



no one left to trust

Name: Commander Griffin

Bio Data: Regional Commander of the Technology Crimes Task Force.
Currently on reserve status in the TCTF Black Ops duty roster.

Strengths: Skilled in hand-to-hand combat, master marksman.

Special Moves: None

Weaknesses: None

Description: As a Regional Commander, Griffin enjoys total control of the personnel and equipment within his region. A cunning and dogged leader, Griffin's enemies know that he will stop at nothing to maintain order and civil control.

TCTF Tactical

Name: TCTF – Tactical Trooper

Bio Data: Tac-Ops troopers form the bulk of the fighting forces of the TCTF.

Strengths: Skilled in hand-to-hand combat, skilled marksman.

Special Moves: Leaping Hammer Punch.

Weaknesses: Slow reaction speed. Weak Special Moves.

Description: Well armored and well trained, the TCTF Tactical trooper is more than a match for his closest Syndicate counter part, the Grunt Striker, but the TCTF Troopers are always outnumbered by their Syndicate adversaries.

TCTF SWAT

Name: TCTF – SWAT Trooper

Bio Data: TCTF SWAT Troopers are the elite agents of the TCTF.

Strengths: Expert in hand-to-hand combat, skilled marksman, powerful .

Special Moves: Lion Axe, Lion Fist, Flying Cross.

Weaknesses: Slow reaction speed.

Description: Unlike contemporary SWAT troopers TCTF SWAT are often deployed alone or in concert with standard Tac-Ops troopers. Often just the sight of these armored



giants is enough to make renegade lawbreakers surrender outright.

Black Ops Tactical

Name: Black Ops – Tactical Trooper

Bio Data: Black Ops tactical troopers form a special unit promoted from the elite of the TCTF.

Strengths: Expert in hand-to-hand combat, skilled marksman.

Special Moves: Leaping Hammer Punch.

Weaknesses: Fair reaction speed. Weak Special Moves.

Description: Better trained and better armored than a TCTF Tactical trooper, and unfettered by conscience, the Black Ops Tactical Trooper is a deadly foe.

Black Ops SWAT

Name: Black Ops – SWAT Trooper

Bio Data: Black Ops SWAT Troopers are the ultimate enforcers of the TCTF.

Strengths: Expert in hand-to-hand combat, skilled marksman.

Special Moves: None.

Weaknesses: None.

Description: Highly skilled in lethal close-combat techniques, the Black Ops Swat Trooper is deadly and merciless.

They are only unleashed against the toughest and most dangerous foes of the WCG.

Sniper

Name: Mercenary Sniper

Bio Data: Mercenary Snipers are long-ranged specialist assassins that sell their services to the highest bidder.

Strengths: Trained in hand-to-hand combat, master marksman.

Special Moves: None.



no one left to trust

Weaknesses: Physically weak.

Description: Mercenary Snipers are veterans of the Uprising War that left the World Coalition Government in control of the globe. The oppressive nature of the WCG has left the mercenaries with numerous opportunities to hone their skills equally on enemies of the state and high-ranking government officials.

Communications Trooper

Name: Comm Trooper

Bio Data: Comm Troopers are the communications specialists for the Syndicate.

Strengths: Trained in hand-to-hand combat, skilled marksman.

Special Moves: Static Fist.

Weaknesses: Physically weak.

Description: Comm Troopers maintain communications between Syndicate assault squads, and serve as field computer specialists.

Striker Green

Name: Striker – Grunt Class (green)

Bio Data: Strikers are the foot soldiers of the Syndicate criminal organization. Grunts are the lowest rank of Syndicate Strikers.

Strengths: Trained in hand-to-hand combat, trained marksman.

Special Moves: None

Weaknesses: Reaction speed is slow, combat repertoire is limited.

Description: Though they are weak individually, Grunt Strikers often appear in numbers, augmenting their limited fighting and shooting skills.



Striker Blue

Name: Striker – Hoplite Class (blue)

Bio Data: Strikers are the foot soldiers of the Syndicate criminal organization. Hoplites are the middle ranking Syndicate Strikers.

Strengths: Skilled in hand-to-hand combat, skilled marksman.

Special Moves: Striker Slam Punch

Weaknesses: Favors high-risk combat maneuvers (jumping attacks).
Limited range on their Special Move.

Description: Hoplites are often deployed in support of weaker Syndicate troops. Hoplites earned their nickname through their flashy fighting style; they will often favor combat maneuvers that leave them vulnerable but can score high damage hits on their opponents.

Striker Red

Name: Striker – Hussar Class (red)

Bio Data: Strikers are the foot soldiers of the Syndicate criminal organization. Hussars are the highest-ranking Syndicate Strikers.

Strengths: Expert in hand-to-hand combat, skilled marksman,
powerful Special Moves.

Special Moves: Striker Slam Punch, Headbutt Dash.

Weaknesses: Headbutt Dash Special Move leaves them vulnerable.

Description: Hussars are the most powerful class of Strikers and only appear on missions of the utmost importance. They are suspected to have undergone extensive physical modification and wear heavily armored uniforms.



NO ONE LEFT TO TRUST

Ninja Green

Name: Ninja – Infiltrator Class (green)

Bio Data: Ninjas are the spies and assassins of the Syndicate criminal organization. Infiltrators are the lowest-ranking Syndicate Ninjas.

Strengths: Expert in hand-to-hand combat, skilled marksman, powerful

Special Moves: Volt Stomp, Volt Suplex.

Weaknesses: Physically weak.

Description: Syndicate Ninjas are trained to operate alone, each one an expert hand-to-hand fighter with a number of deadly Special Moves. Infiltrator class ninjas are dispatched primarily on missions of information gathering or observation.

Ninja Blue

Name: Ninja – Eliminator Class (blue)

Bio Data: Ninjas are the spies and assassins of the Syndicate criminal organization. Eliminators are the mid-ranking Syndicate Ninjas.

Strengths: Expert in hand-to-hand combat, skilled marksman, powerful

Special Moves: Volt Stomp, Volt Suplex, Skorp Kick.

Weaknesses: Physically weak.

Description: Eliminators are the Syndicate assassins, often dispatched with Infiltrator class ninjas in support.

Ninja Red

Name: Ninja – Avenger Class (red)

Bio Data: Ninjas are the spies and assassins of the Syndicate criminal organization. Avengers are the highest-ranking Syndicate Ninjas.

Strengths: Expert in hand-to-hand combat, skilled marksman, powerful

Special Moves: Volt Stomp, Volt Suplex, Skorp Kick, Lightning Driver.



Weaknesses: Physically weak.

Description: Avenger class ninjas have been personally trained by Mukade, the Syndicate master assassin. Avengers are dispatched at his direction, often to eliminate the most powerful enemies of the Syndicate.

Fury Green

Name: Fury – Harridan Class (green)

Bio Data: The Furies are command-level Syndicate assault troops.

Harridans are the lowest ranking Syndicate Furies.

Strengths: Expert in hand-to-hand combat, skilled marksman.

Special Moves: Foot Stomp.

Weaknesses: Physically weak

Description: Furies are deployed as field commanders for large numbers of Syndicate assault troops.

Harridans coordinate the activities of between 2 to 4 squads in the field.

Fury Blue

Name: Fury – Banshee Class (blue)

Bio Data: The Furies are command-level Syndicate assault troops.

Banshees are mid-ranking Syndicate Furies.

Strengths: Expert in hand-to-hand combat, skilled marksman.

Special Moves: Foot Stomp, Whirl Kick.

Weaknesses: Physically weak.

Description: Banshees oversee critical Syndicate operations, or act as personal aides and bodyguards to Syndicate senior staff.



no one left to trust

Fury Red

Name: Fury – Valkyrie Class (red)

Bio Data: The Furies are command-level Syndicate assault troops.

Valkyries are the highest-ranking Syndicate Furies.

Strengths: Expert in hand-to-hand combat, skilled marksman.

Special Moves: Foot Stomp, Whirl Kick, Ten-Shadow Punch.

Weaknesses: Physically weak.

Description: The Valkyries are Muro's personal aides and bodyguards. Their presence always indicates his personal involvement in an operation.

Elite Green

Name: Elite Striker – Ogre Class (green)

Bio Data: Elite Strikers are the most powerful Syndicate troops.

Ogres are the lowest class of Elite Strikers.

Strengths: Skilled in hand-to-hand combat, trained marksman, enhanced physical strength.

Special Moves: Cannonball Roll.

Weaknesses: Slow reaction speed. Cannonball Special Move leaves them vulnerable.

Description: Elite Strikers provide tremendous combat power in support of Syndicate assault troops. Though they appear slow and lumbering, their fighting style makes the most of their great physical strength.

Ogre class Elites are dispatched in support of smaller, weaker assault troops.



Elite Blue

Name: Elite Striker – Giant Class (blue)

Bio Data: Elite Strikers are the most powerful Syndicate troops.
Giants are mid-ranking Elite Strikers.

Strengths: Skilled in hand-to-hand combat, trained marksman,
enhanced physical strength.

Special Moves: Cannonball Roll, Whirling Dervish.

Weaknesses: Slow reaction speed. Cannonball Special Move leaves
them vulnerable.

Description: Giant class Elite Strikers function like living tanks: wad-
ing through battle while shaking off tremendous amounts
of physical damage.

Elite Red

Name: Elite Striker – Titan Class (red)

Bio Data: Elite Strikers are the most powerful Syndicate troops.
Titans are the highest-ranking Elite Strikers.

Strengths: Expert in hand-to-hand combat, trained marksman,
enhanced physical strength.

Special Moves: Cannonball Roll, Whirling Dervish, Crucifix Punch.

Weaknesses: Slow reaction speed. Cannonball Special Move leaves
them vulnerable.

Description: Titan class Elite Strikers are only rumored to exist.
Though no living witnesses exist to confirm reports, it is
said that the Titan class Elites can absorb incredible
amounts of punishment and emerge alive.

Tanker Green

Name: Tanker – Skirmisher Class (green)

Bio Data: Tankers are illegal SLD androids created by the Syndicate. Skirmishers are the lowest class of Tanker SLDs.

Strengths: Skilled in hand-to-hand combat, trained marksman, enhanced physical strength.

Special Moves: Hover Kick.

Weaknesses: Limited range on Hover Kick Special Move.

Description: In defiance of WCG law the Syndicate has moved forward on the development of physically mature SLD androids. Tankers are based on the engram patterns of a particularly obnoxious Syndicate commander with a penchant for professional wrestling. Skirmishers are the earliest models created by the Syndicate and so are the least refined.

Tanker Blue

Name: Tanker – Brawler Class (blue)

Bio Data: Tankers are illegal SLD androids created by the Syndicate. Brawlers are the mid-level class of Tanker SLDs.

Strengths: Skilled in hand-to-hand combat, trained marksman, enhanced physical strength.

Special Moves: Nuclear Tackle, Blockbuster.

Weaknesses: Nuclear Tackle Special Move leaves them vulnerable and prone.

Description: Brawlers are considerably more advanced than the previous Tanker models, and are better able to harness their artificial strength.



Tanker Red

Name: Tanker – Crusher Class (red)

Bio Data: Tankers are illegal SLD androids created by the Syndicate.

Crushers are the highest level class of Tanker SLDs

Strengths: Expert in hand-to-hand combat, trained marksman, enhanced physical strength.

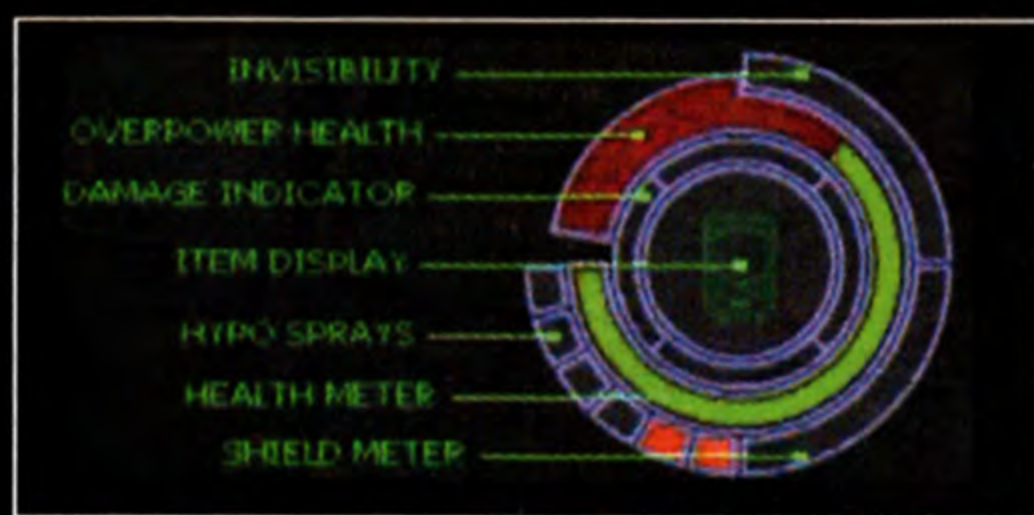
Special Moves: Nuclear Tackle, Blockbuster, Atomic Elbow Drop.

Weaknesses: Nuclear Tackle Special Move leaves them vulnerable and prone.

Description: The Crusher class of SLD is a very recent addition to the Syndicate forces. Faster and stronger than all of its predecessors, the Crusher class is the ultimate expression of SLD combat technology.

TACTICAL DISPLAY

These two display meters provide all of Konoko's vital statistics, and are found on the lower left and right sections of the screen display during gameplay.



USEFUL ITEMS

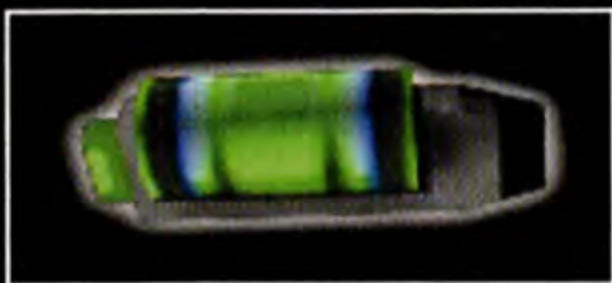
You will find many handy items scattered about the game's landscape; be sure to scour all areas thoroughly, as you never know what can be found where. Here are just some of the items you will find:



Ballistic Ammo Reload Weapon

Coordinating the arms of mercenary and corporate forces during the Great Uprising had WCG researchers scrambling to solve their logistical problems. Their solution was modular, generic casings and projectiles loaded with mission-specific ordnance payloads. "Blank bullets" allowed modular components to adapt and reload any ballistic weapon on the battlefield.

Hint: Reloading a weapon takes time. Plan accordingly.



Energy CellReload Weapon

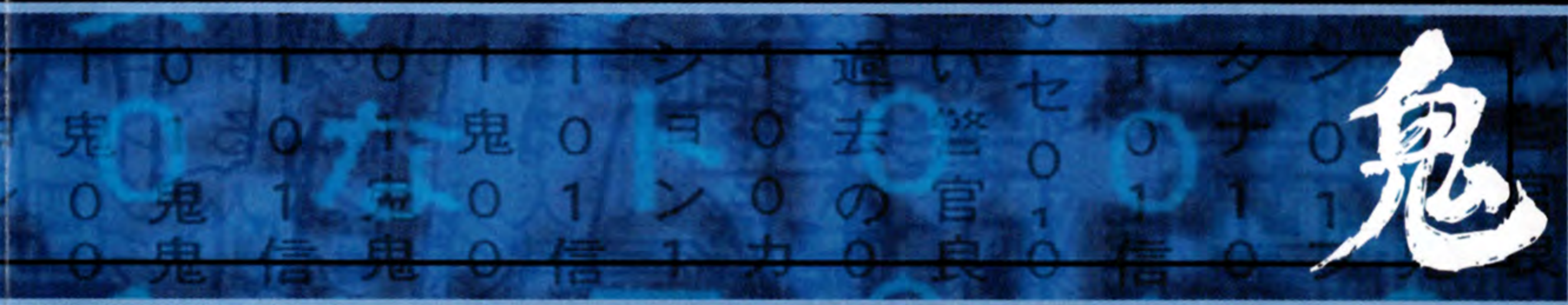
Governments and markets welcomed the emergence of the World Coalition Government, or were crushed beneath it. As hostilities subsided the WCG began to standardize "fundamental technical elements" across all market regions. The Ubiquitous Energy Cell has replaced all other portable power sources.

Hint: The short span of time needed to reload can be all an enemy needs. Find a safe haven to reload in.



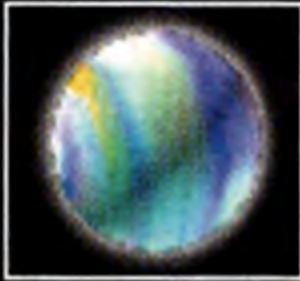
Hypo Spray Recover Health

Hypo sprays deliver stimulants, analgesics, and active neuro-biologi-



cal reinforcing elements through a sub-dermal injector. The solution takes time to act on the body: further trauma while it is active reduce the hypo's maximum healing potential. Even a few hits will cancel the effect altogether. Multiple hypos can be activated at once to extend the maximum healing range.

Hint: Hypo near full health for temporary Daodan Overpower Mode – boosted health and super-strength!



Phase Cloak Temporary Invisibility

The Phase Cloak agitates the user's molecules out of the visible light spectrum. The effect only lasts for 30 seconds: any longer and the user might suffer irreversible cellular damage. A weakness of the cloaking effect is that the wearer becomes visible for a moment during physical contact with non-phased bodies.

Hint: The 30 seconds begin immediately upon picking up the cloak.



Force Shield Bullet Barrier

The Force Shield surrounds the body of the wearer and absorbs the impact of any projectile that strikes it. The shield can only absorb a limited amount of punishment before it collapses; as it grows weaker its intensity fades.

Hint: Picking up a shield will cause you to discard your current shield forever.





no one left to trust

IMPORTANT INFORMATION

Take A Breather!

It pays to take a 10-minute break in every hour of play, so put the action on hold...

- Press the **START** button to freeze the action.
- Press the **START** button while the action is frozen to resume play.

Troubleshooting

In the unlikely event that Oni refuses to work, contact our Customer Services Department at :
9900 Franklin Square Drive Suite A
Baltimore, MD 21236

ATTN: Tech Support, or call 410-933-9191 Monday - Friday between 9:00 AM - 5:00 PM EST excluding major holidays. Fax: 410-933-1740. E-mail: support@talonsoft.com. And if you write, don't forget to include your name, address and telephone number.



CREDITS

Rockstar New York

Executive Producer
Sam Houser

Technical Producer
Gary J. Foreman

Producer
Jeremy Pope

Rockstar Production Team

Terry Donovan
Jamie Leece
Kevin Gill
Jennifer Kolbe
Jenefer Gross
Jamie King
Jung Kwak
Corey Wade
Amy Salzman
Chris Carro
Brian Wood
Adam Tedman
Paul Yeates
Stanton Sarjeant

Cover Art by
Lorraine Reyes

Back Manual Cover Art by
Jacen Burrows

Public Relations
Jeff Castaneda

Technical Coordinator
Brandon Rose

QA Manager
Jeff Rosa

Game Analyst
Adam Davidson

Test Team
Lance Williams
Richard Huie
Joe Greene
Neil McCaffrey
Mark Garone
Steve Robert



no one left to trust

ROCKSTAR CANADA

Producer
Kevin Hoare

Lead Programmer
Andy Brownbill

Programming
Stephen Orr
Leigh McRae
Kevin Hoare
Paul Glinker

Art Director / Lead Artist
Ray Larabie

3D Animation
Brian Shelton

Interface Art
Rebecca Ott

Data Optimization
Sergei Kuprejanov

Additional Programming /
Special Thanks
Michael Evans
Chris Butcher

Test Team
Jay Penney
Zandro Chan
Arthur Chiang
Shane Anderson



WARRANTY

Rockstar Games, a division of Take-Two Interactive Software, Inc., warrants to the purchaser only that the disc provided with this manual and the software program coded on it will perform in accordance with the description in this manual when used with the specified equipment, for a period of 90 days from the date of purchase.

If this program is found to be defective within 90 days of purchase, it will be replaced. Simply return the disc to Rockstar Games or its authorized dealer along with a dated proof of purchase. Replacement of the disc, free of charge to the original purchaser (except for the cost of returning the disc) is the full extent of our liability.

THIS WARRANTY IS IN LIEU OF ALL OTHER WARRANTIES, WHETHER ORAL OR WRITTEN, EXPRESSED OR IMPLIED. ALL IMPLIED WARRANTIES, INCLUDING THOSE OF MERCHANTABILITY AND FITNESS FOR A PARTICULAR PURPOSE, IF APPLICABLE ARE LIMITED IN DURATION TO 90 DAYS FROM THE DATE OF PURCHASE OF THIS PRODUCT.

Rockstar Games shall not be liable for incidental and/or consequential damages for the breach of any express or implied warranty including damage to property and, to the extent permitted by the law, damages for personal injury, even if Rockstar Games has been advised of the possibility of such damages. Some states do not allow the exclusion or limitation of any incidental or consequential damages or limitations on how long an implied warranty lasts, so the above limitations or exclusions may not apply to you.

This warranty shall not be applicable to the extent that any provision of this warranty is prohibited by any federal, state, or municipal law, which cannot be pre-empted. This warranty gives you specific legal rights and you may also have other rights, which may vary from state to state.

You may not reproduce, prepare derivative works based on, distribute copies of, offer for sale, sell, transfer ownership of, rent, lease, or lend to others the Program or accompanying documentation, or any portion or component of the Program or accompanying documentation; provided, however, that you may transfer the entire Program and accompanying documentation on a permanent basis as long as you retain no copies (including archival or backup copies) of the Program, accompanying documentation, or any portion or component of the Program or accompanying documentation, and the recipient agrees to the terms of the Agreement. Further, you may not modify, reverse engineer, disassemble, decompile or translate the Program or accompanying documentation, or any portion or component of the Program or accompanying documentation, nor may you make any copies of the Program modules for use with other programs. This program is intended for private use only.

**ROCKSTAR GAMES, A DIVISION OF TAKE-TWO INTERACTIVE SOFTWARE
575 BROADWAY 3RD FLOOR
NEW YORK, NY 10012**

ESRB RATING

This product has been rated by the Entertainment Software Ratings Board. For information about the ESRB rating, or to comment about the appropriateness of the rating, please contact the ESRB at 1-800-771-3772.



Rockstar Games 575 Broadway New York, NY 10012 Take-Two Interactive Software, Inc.
Oni and the Oni logo are trademarks of Take-Two Interactive Software, Inc.
Rockstar Games and the Rockstar Games logo are trademarks of Take-Two Interactive Software, Inc.
© 2000 All rights reserved.

Licensed for play on the PlayStation 2 computer entertainment systems with the NTSC U/C designation only.
"PlayStation" and the "PS" Family logo are registered trademarks of Sony Computer Entertainment Inc. The
ratings icon is a trademark of the Interactive Digital Software Association. Manufactured and printed in the U.S.A.
THIS SOFTWARE IS COMPATIBLE WITH PLAYSTATION 2 CONSOLES WITH THE NTSC U/C
DESIGNATION. U.S. AND FOREIGN PATENTS PENDING.